



# Constellation Schools Lorain Community Middle

*"The Right Choice for Parents and a Real Chance for Children!"*



# *Reaching for the Stars!*

2008-2009 Annual Report

2009-2010 School Calendar



# Mission, Vision, Value Statements & Slogans



## Mission

Constellation Schools create and provide diverse superior educational opportunities for a community of learners, built on a foundation of character education in a safe environment, ensuring the success of all children in our advancing technological society.



## Value

As a school of choice, we believe all children deserve a superior education in a safe, caring, nurturing environment. **We** will create a community of learners where children excel, become responsible citizens, and are exposed to the highest ethical standards.

## Organization Slogan

*The Right Choice for Parents  
and a Real Chance for Children!*

## Vision

Constellation Schools will create a premier learning community characterized by high expectations and academic excellence.

Our students will be actively engaged in the process of learning and will become responsible involved citizens. They will be life long learners, technologically proficient and perform to their maximum potential.

Our personnel will be committed, competent, compassionate individuals who will consistently exemplify the highest ethical and professional standards.

Our management team will provide superior leadership, resources, and support to facilitate the optimal operations of our school.

Our Board of Directors will guide the organization in creating a culture of excellence and success.

## Character Education Slogan

*Remember  
We all have Choices.  
Choices have Consequences.  
Be Smart and Make the Right Choice!*



# Constellation Schools & Its History

Constellation Schools is an Ohio not-for-profit corporation, and IRC 501 (c)(3) tax exempt organization, that was established in 1999 to create and operate high quality community (charter) schools by offering a superior, safe learning environment. Currently there are sixteen (16) schools in Constellation's community of schools.

Constellation Schools offer families a real choice for their children to receive a high-quality education. Our schools are privately operated public charter schools of choice. An education at Constellation starts during the early years of kindergarten, where we begin to prepare students to become successful, well-rounded, life-long learners by developing their academic foundation and providing them with the tools to be successful in their future endeavors. Our learning communities are characterized by small classes, high expectations, involved parents, and engaged students. We provide safe and secure buildings; the best available curriculum; current textbooks; and, extensive use of computers and other technology. Character education is the cornerstone of our program. Students are expected to adhere to a demanding code of behavioral conduct, including a dress code, and are held accountable for their actions through a comprehensive and strict disciplinary policy. Constellation Schools hires only highly qualified, state-certified/licensed teachers and provides extensive and on-going professional development for all personnel.

In addition, our schools offer parents a real opportunity to be involved in the education of their child by creating a learning community where teachers, parents and students work together to ensure academic success for all students. Parents are expected to be active participants in the education of their children, support the schools policies, supervise homework and attend conferences.

## **Constellation Schools Grades K-4**

### **Old Brooklyn Community Elementary (1998)**

*Cherie Kaiser, Principal*  
4430 State Road, Cleveland, Ohio 44109  
216.661.7888 • 216.661.5975 fax

### **Westpark Community Elementary (2001)**

*Macey Baldizzi, Principal*  
16210 Lorain, Cleveland, Ohio 44111  
216.688.0271 • 216.688.0273 fax

### **Lorain Community Elementary (2001)**

*Melisa Shady, Principal*  
201 West Erie Avenue, Lorain, Ohio 44052  
440.204.2130 • 440.204.2134 fax

### **Puritas Community Elementary (2003)**

*Meg Paulus, Principal*  
15204 Puritas Avenue, Cleveland, Ohio 44135  
216.688.0680 • 216.688.0609 fax

### **Westside Community School of the Arts (2007)**

*Deborah Kilbane, Principal*  
3727 Bosworth, Cleveland, Ohio 44111  
216.688.1900 • 216.688.1902 fax

## **Constellation Schools Grades K-7**

### **Stockyard Community Elementary (2004)**

*Audrey Petsche Sims, Principal*  
3200 West 65th Street, Cleveland, Ohio 44102  
216.651.5143 • 216.651.9515 fax

### **Madison Community Elementary (2004)**

*Gregory Cek, Principal*  
2015 West 95th Street, Cleveland, Ohio 44102  
216.651.5212 • 216.651.9040 fax

## **Constellation Schools K-6**

### **Elyria Community Elementary (2001)**

*Tracey Frierson, Principal*  
300 North Abbe Road, Elyria, Ohio 44035  
440.366.5225 • 440.366.6280 fax

### **Mansfield Community Elementary (2002)**

*Bethany Young, Principal*  
215 North Trimble Road, Mansfield, Ohio 44906  
419.522.4578 • 419.522.0045 fax

## **Constellation Schools Grades K-3**

### **Mansfield Visual & Performing Arts (2008)**

455 Park Avenue West, Mansfield, Ohio 44906  
419.522.3563 • 419.522.2705 fax

## **Constellation Schools Grades 5-8**

### **Old Brooklyn Community Middle (2006)**

*Amy Mobley, Principal*  
4430 State Road, Cleveland, Ohio 44109  
216.351.0280 • 216.661.5975 fax

### **Westpark Community Middle (2006)**

*Karil Sako, Principal*  
4400 West 140 Street, Cleveland, Ohio 44135  
216.251.7200 • 216.251.7220 fax

### **Puritas Community Middle (2006)**

*Donald Disantis, Principal*  
15204 Puritas Avenue, Cleveland, Ohio 44135  
216.251.1596 • 216.251.3540 fax

### **Lorain Community Middle (2006)**

*Debbie Thoren, Principal*  
307 West 7th Street, Lorain, Ohio 44052  
440.242.2023 • 440.244.0857 fax

## **Constellation Schools Grades K-10**

### **Parma Community Elementary, Middle & High**

(2000)  
*Linda Geyer, Principal*  
Elementary  
7667 Day Drive, Parma, Ohio 44129  
440.888.5490 • 440.888.5890 fax  
Middle and High  
5983 West 54th Street, Parma, Ohio 44129  
440.845.2587 • 440.845.2834 fax

## **Constellation Schools K-12**

### **Outreach Academy (2006)**

*Mary Wideman-Blake, Principal*  
3727 Bosworth, Cleveland, Ohio 44111  
216.688.1900 • 216.688.1902 fax

## **Constellation Schools Administrative Office**

5983 West 54th Street, Parma, Ohio 44129  
440.845.4200 • 440.845.4201 fax



# Chairman's Message



Preliminary results from the Ohio Department of Education indicate that this will be a banner year for the Constellation Schools, with more of our schools rated "Excellent" and "Effective" than ever before. This is exciting news as it indicates that the many additional supports our schools adopted and implemented this past year have been effective in helping students become successful.

Our continued commitment to professional development and training for our teachers, as well as the collaboration opportunities we created last year, appear to be paying off. As more and more research confirms; it is the quality of the teacher in the classroom that has the most significant impact on student learning. We continue to support our teachers and provide them with the resources they need to be successful. Our teachers and schools also benefit from the overwhelming support of our parents. Supportive, involved parents are critical to the success of our students and our schools.

We are pleased with the exception of our Stockyard multi-purpose room addition, construction projects at all of our schools were completed during the 2008/2009 school year. The improvements at Parma and Madison were completed during the first half of the school year; Old Brooklyn's middle school students began occupying the new addition during the second half of the school year; and Westpark middle school students will return to the Lorain Road location for this coming school year. We still face many challenges with respect to facilities; however we are proud of what we have been able to accomplish to improve the educational environments in many of our buildings, especially in these difficult economic times.

We also owe a great debt to our many parents who actively supported our schools during this year's tough state budget fight. Charter schools throughout the state were threatened with extinction, and our parents stood up for their right to choose the school best suited for their children.

Our Parma Community High School also continues to be a source of great pride. Introduced during the 2007/2008 school year, our high school grew dramatically for the 2008/2009 school year, and we expect strong growth for the coming year and into the future. However, more important than the physical growth of the school is the fact that our students are successfully passing the Ohio Graduation Test during 10<sup>th</sup> grade. Initiating a high school was a real challenge for us, but early results are demonstrating that it was a worthwhile endeavor.

Our Leadership Training Program continues to play an important role in the growth of the organization. Each year we provide our program candidates with the experiences and knowledge they will need to be effective leaders in the Constellation organization.

We fully expect that when the performance results are finally released that Constellation schools will again make up the majority of high performing community schools in northeast Ohio and throughout the state, proving once more that Constellation schools are:

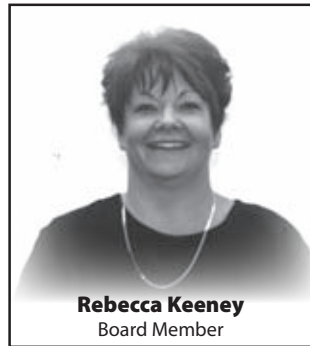
***The Right Choice for Parents and a Real Chance for Children.***



# Constellation Schools Board & Administrative Staff



**Richard Lukich**  
Board Chairman



**Rebecca Keeney**  
Board Member



**Gerald Preseren**  
Board Member

## Constellation Schools Lorain Community Middle Sponsor

*Patricia Hughes, Director of Community Schools*  
*Buckeye Community Hope Foundation*  
3021 East Dublin, Granville Road  
Columbus, Ohio 43231 • 614.942.2020

### **Executive Director**

Gerald Preseren

### **Treasurer**

Thomas Babb

### **Accountant**

Jean Sandler

### **Administrative Assistants/Finance**

Dee Ann Bruner

Edie Myhre

### **Technology Coordinator**

David Calco

### **Technology Specialists**

Gary Schaefer

Randall Kufel

Lisa Geyer

Shawnda Thombs

### **Coordinator of Educational Programs**

John Roberts

### **EMIS Manager**

Rebecca Novak

### **Coordinator of Educational Services**

Roy Zeman

### **School Psychologists**

Becky Jordan

Lisa Stepney

Heather Zeman

### **Speech and Language Pathologists**

Jill Teresczuk

Amanda Stricker

### **Occupational Therapists**

Karen Boose

Frances Horvath

### **School Nurses**

Kimberly Stanislo

Karen Baker

Lisa Stern

Kelley Vazquez

Diane Sauder

Julia Howerton

### **Coordinator of Staff & Professional Development**

Sharon Morgan

### **Manager of Staff Development**

Shelia Woidke

### **Coordinators' Administrative Assistant**

Marybeth Oko

### **Facility Operations Manager**

Jeffrey Soltis

### **Maintenance**

John Allen

### **Human Resource Manager**

Karen Florian

### **Administrative Assistant/ Human Resources**

Amy Spears

### **Receptionist**

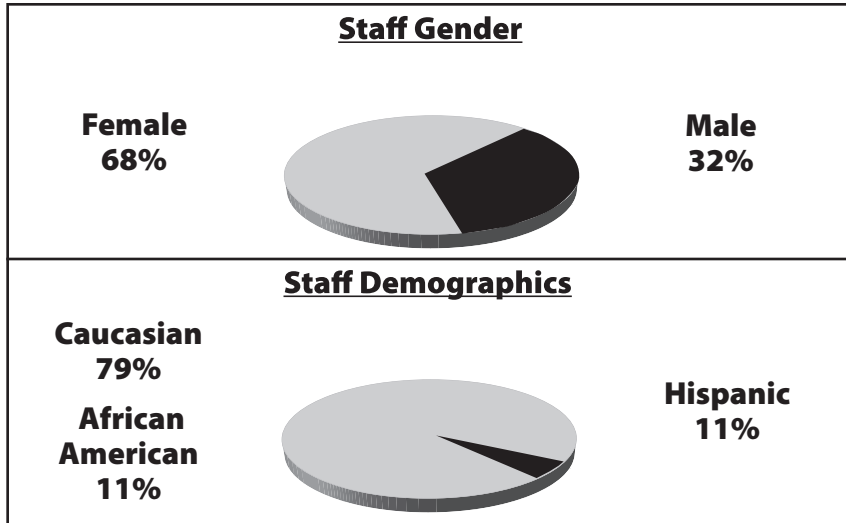
Crystal Victor

### **Manager of Marketing & Public Relations**

Lisa Vinarcik



# Lorain Community Middle Board & Staff

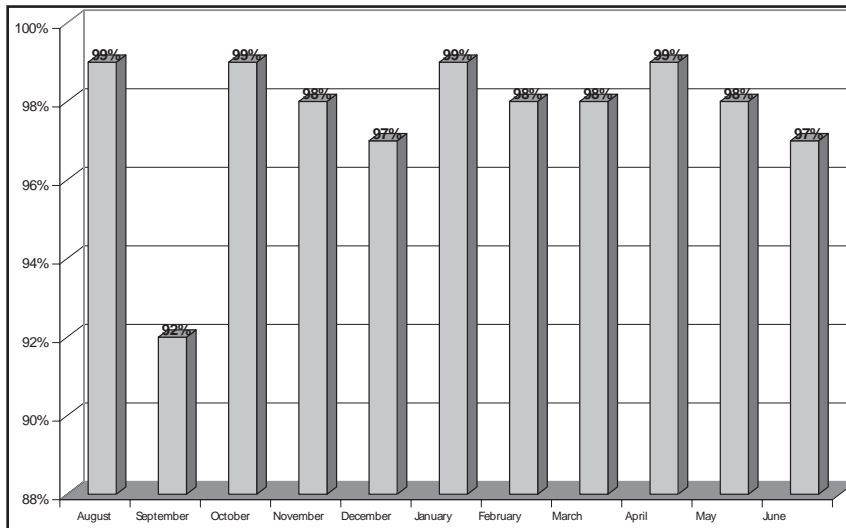


## Lorain Community Middle Board Members

**Board President** - Mark Stypczynski  
**Board Members** - Donald Disantis - Anna Hogan  
 Laura Trivison - Deborah Kilbane

The entire teaching staff at Lorain Community Middle have professional certificates and meet the "Highly Qualified Requirements" of the *No Child Left Behind Act*. The staff of Lorain Community Middle strives to ensure that the educational, cultural, and developmental needs of all students are met on a daily basis in a safe environment.

### Staff Attendance Percentages



#### Principal

Deborah Thoren

#### Administrative Assistants

Yazmin Millan

#### Fifth Grade

Sheila Delzani  
Louise Robison

#### Sixth/Seventh/Eighth Grades

Bryan Camp  
Melanie Dunstan  
Steven Gedeon  
Dyana Scott

#### Title 1

Jennifer Earl

#### Special Education

Stephanie Brindza  
Christine Schneider

#### Physical Education

Mason Cooley

#### Music

Alison Ortenzi

#### School Psychologist

Heather Zeman

#### Building Substitute

William Utt

#### Aide

Lynette Patton  
Angel Sanchez

#### School Nurse

Julia Howerton

#### Food Service

Jaquenda Young

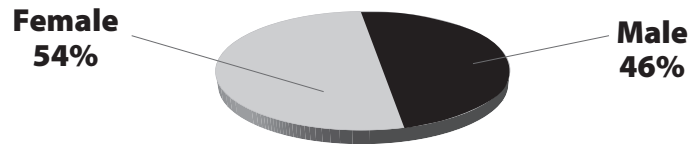
#### Custodian

Eric Rollison

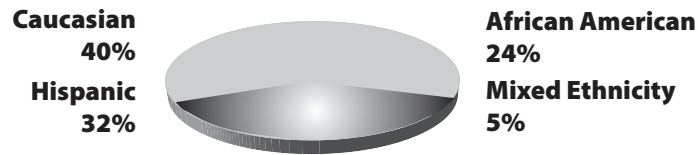


# Student Enrollment, Attendance & Demographics

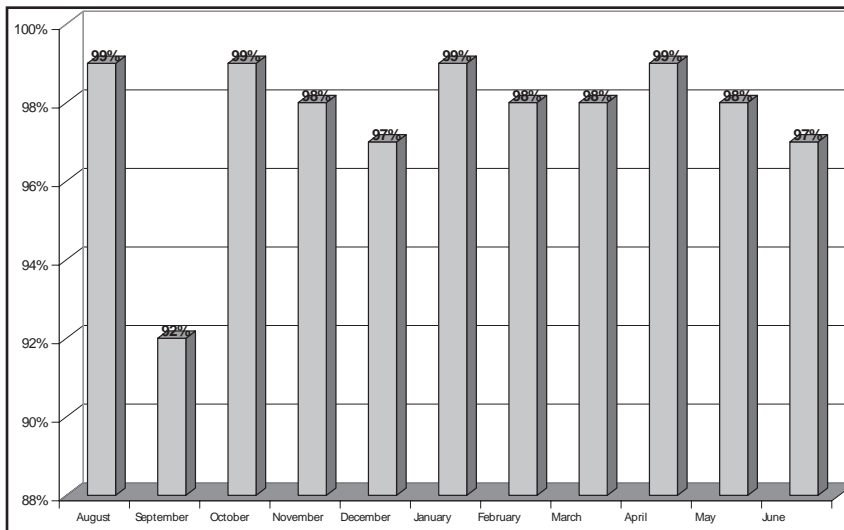
## Student Gender



## Student Demographics



## Student Attendance Percentages



## About Our Students

Students at Lorain Community Middle are taken on a first come, first served basis during the first two weeks of December. Those students who are currently enrolled are ensured a place for the following school year if they enroll during these two weeks. If more students apply than there are spots, a lottery is held and a waiting list is formed.

## Student per Class/Teacher Ratio for the 2008-2009

20 Students : 1 Teacher  
 102 Students Enrolled  
 65% Eligible for Low Income

## Demographics

24 % African American  
 40 % Caucasian  
 32 % Hispanic  
 5 % Mixed Ethnicity

## Home School Notification

The school is a public school and students enrolled in and attending the school are required to take achievement tests and other examinations prescribed by law. In addition, there may be other requirements for students at the school that are prescribed by law. Students who have been excused from the compulsory attendance law for the purpose of home education as defined by the Administrative code shall no longer be excused for that purpose upon their enrollment in a community school.



# Educational Plans/Programs



During this academic year, all Constellation Schools utilized the Ohio Academic Content Standards Education Program to prepare our students for the Ohio Achievement Tests at Grades 3-8 and the Ohio Graduation Test at Grade 10.

All of our curriculum is selected and reviewed annually by our Curriculum Council and ultimately approved by each of our School's Boards. Our curriculum is aligned with the Ohio Academic Content Standards and is designed to guide students toward their grade level goals. Content areas include: Reading/Language Arts, Spelling/Phonics, Math, Science, Social Studies, Music, Physical Education/Health, Computers and Spanish.

Teachers establish high academic measures for achievement and behavior in their classrooms. Through age appropriate teaching methods, all students will reach or exceed their maximum potential. The cornerstone of our academic program is our strong emphasis on Character Education. Character Education permeates throughout our curriculum. All of our classrooms and hallways have a variety of posters and bulletin boards that define acceptable character. Good behavior and appropriate manners from everyone is a constant expectation of our students and staff. Character Education enhances our educational plan while securing a safe and nurturing learning environment for all of our students.

Title 1 services (small grouping with a reading/math teacher) and Special Education Services are implemented to assist students who qualify for special services. Furthermore, our classroom instruction is enhanced through the use of technology in our computer labs, integrating classroom projects with such programs as word processing, power point presentations and internet research. Many of our classrooms are utilizing Smart Board Education and all of our schools are utilizing the latest in technology innovations.





# Professional Development



Constellation Schools are committed to quality professional development. Our Local Professional Development Committee (LPDC) follows all state requirements to renew teaching/principal certificates and licensures. Our professional renewal process ensures a close connection between renewal activities of the educators and classroom practices. The continued development and improvement of relevant and applicable professional pedagogical skills and knowledge are essential to the education process. Through professional development we can ensure that all students reach their full potential to contribute to a democratic society including maximizing each student's abilities and encouraging self-reflection and a lifelong love of learning.

Several professional development opportunities throughout the school year are provided such as:

- Positive Discipline
- Classroom Management
- Saxon Math
- Character Education in the Classroom
- Pathwise Training (How to mentor an entry year teacher)
- Differentiated Instruction
- Progressbook
- Teaching Strategies
- Special Education Procedures
- Technology Conference



Constellation Schools provide teachers up to \$300 per year toward professional development and allow their teachers and staff to choose some of their own professional development opportunities. Such opportunities include:

- Strategies for Teaching Beginning Readers and Writers
- Crisis Prevention
- Practical Strategies to Enhance the Classroom and Strengthen Student Behavior
- Grade Level Conferences
- Title One Conference
- Motivating Difficult Students
- Practical Ideas and Activities for the First Year Teacher
- Using Technology to Improve Math Instruction
- Smartboard Training
- Reading Plus

## **Entry Year Teacher Program**

A full year program is provided to all entry year teachers. This program offers monthly meetings, support, and information that will enhance the first year teacher's experience. The preparation for the Praxis III assessment is a large part of the entry year teacher program.

## **Leadership Training Program**

A one year intern program that provides an intense hands-on experience for highly qualified, successful teachers who wish to become leaders. The professional development internship is ongoing, highly focused, and designed to meet the individual needs of each intern.



# Ohio Achievement Test



STATE INDICATORS	PERCENTAGE OF STUDENTS AT AND ABOVE THE PROFICIENT LEVEL		
	Lorain Middle 2008-2009	School Comparison Group <sup>1</sup> 2008-2009	State 2008-2009
<b>5th Grade Achievement</b> <i>The state requirement is 75 percent</i>			
6. Reading	38.2	50.3	72
7. Mathematics	41.2	32.5	62.3
8. Science	29.4	38.4	70.6
9. Social Studies	26.5	28.3	61.6
<b>6th Grade Achievement</b> <i>The state requirement is 75 percent</i>			
10. Reading	70.4	62.7	<b>81.3</b>
11. Mathematics	51.9	46.9	<b>75.2</b>
<b>7th Grade Achievement</b> <i>The state requirement is 75 percent</i>			
12. Reading	63.2	59.7	<b>76.6</b>
13. Mathematics	47.4	43.9	74.3
14. Writing	63.2	65.7	<b>80.5</b>
<b>8th Grade Achievement</b> <i>The state requirement is 75 percent</i>			
15. Reading	55	57.9	72.4
16. Mathematics	65	48.8	70.6
17. Science	35	27.2	62
18. Social Studies	25	20	51.1



## PERFORMANCE INDEX SCORE

The Performance Index Score reflects the achievement of every tested student. The score is a weighted average of all tested subjects in grades 3-8 and 10. The most weight is given to the advanced students (1.2), and the weights decrease for each performance level. This creates a scale of 0 to 120 points, with 100 being the goal. Looking at the Performance Index Score over time shows trends in school achievement.

Performance Index Score Over Time	2008-2009	2007-2008	2006-2007
	73.9	67.2	62.8

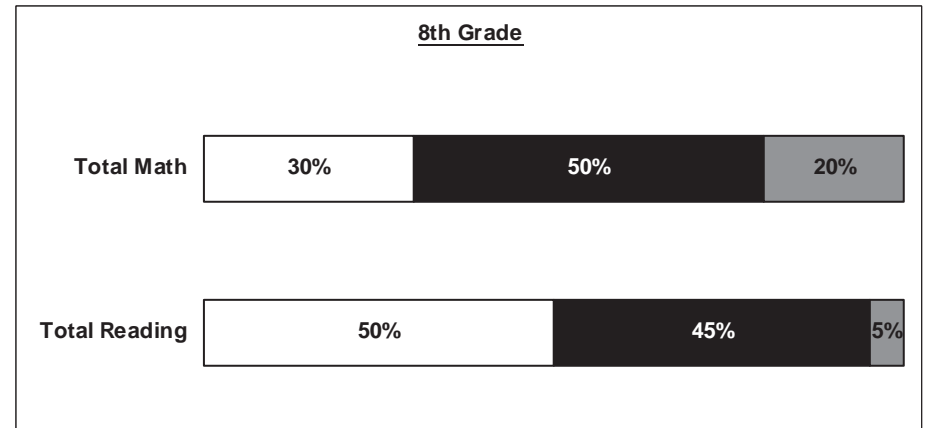
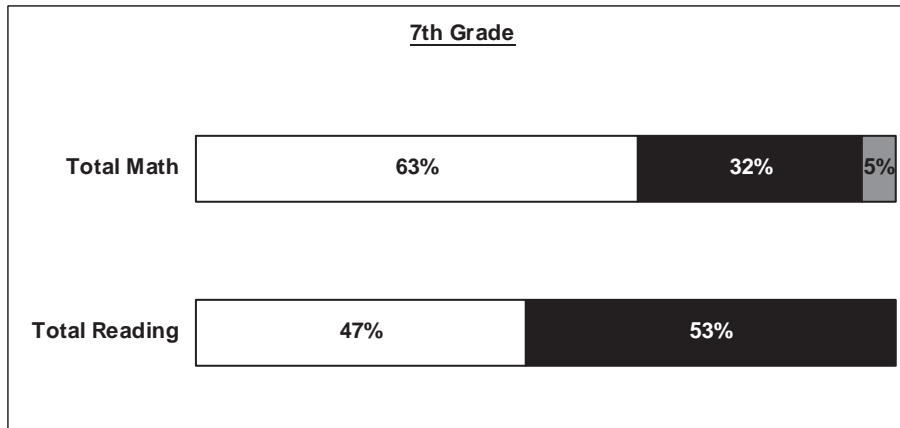
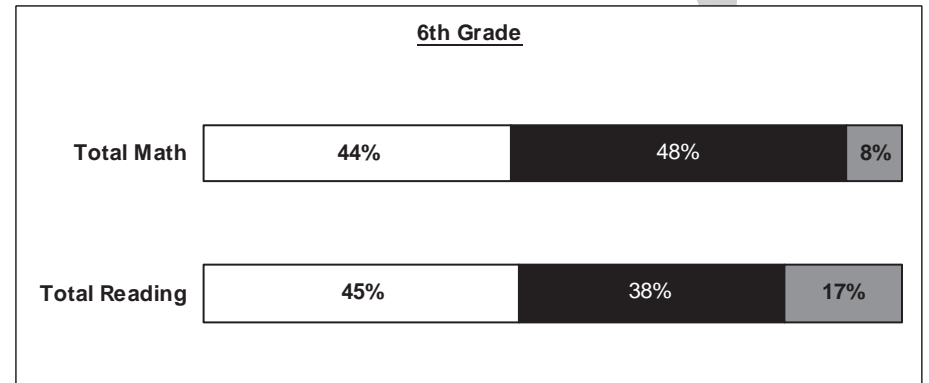
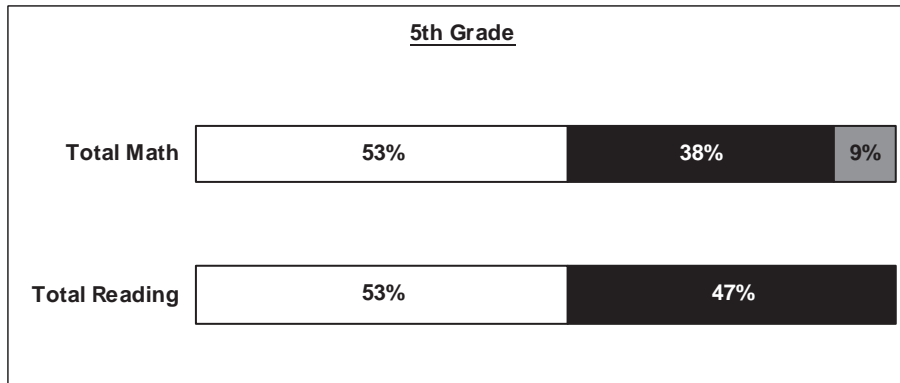
<sup>1</sup> Your school comparison group is based on the performance of all schools in Lorain City School District.



# Stanford Achievement Test



The Stanford Achievement Test—Tenth Edition is administered annually in grades K-8 to determine student progress within and across the curriculum. The results below are reflective of the most recent administration in March of 2009. The data indicates the percentage of students within each grade level who performed below average (white), average (black) or above average (gray) in the areas of Math and Reading.





# Constellation Schools

## Lorain Community Middle

### Financial Report for Fiscal Year 2009

#### Highlights for the Year

- 3rd annual audit issued for 2008 with an "unqualified opinion" (best opinion available)

*The Cash Basis Report of Revenues and Expenditures for the Year ended June 30, 2009 reflects the activities of Constellation Schools: Lorain Community Middle during the year. The information provided below refers to this report and the accompanying graphs.*

#### REVENUES

The largest source of operating revenue (66%) comes from the State of Ohio School Foundation Program. This funding is earned at a base rate of \$5,732 for each student enrolled during the year. Additional funds are provided for the special needs of students, the poverty level of the community in which each student resides, and other adjustments.

#### State and Federal Grants

State and Federal Grants (11%) supplement school operations for specific purposes. The school received grants for Title I Reading, Professional Development, Technology, Safe and Drug Free Schools, Innovative Programs, Special Education, Entry Year Teacher Mentoring, Statistical Reporting (EMIS) and Electronic Communications.

#### Materials Fees

Materials Fees (1%) are collected from each student to provide consumable materials used during the year.

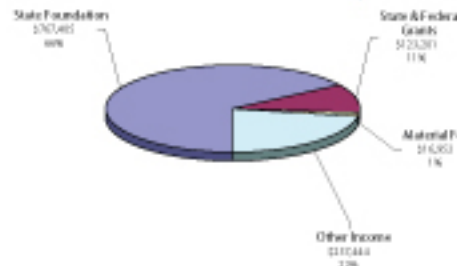
#### Other income

Other income (22%) includes interest earned on bank account activity, contributions and donations, services provided to Constellation Schools: Lorain Community Elementary and other miscellaneous items.

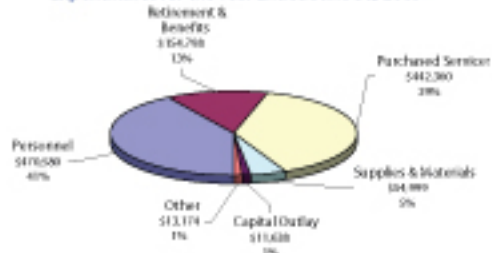
Constellation Schools: Lorain Community Middle  
Cash Basis Statement of Revenues and Expenditures  
for the Year ended June 30, 2009  
(Unaudited)

Beginning Cash - July 1, 2008	\$ 17,431
<b>Revenues</b>	
State Foundation	\$ 767,405
State & Federal Grants	\$ 123,201
Material Fees	\$ 16,953
Other Income	\$ 257,444
<b>Total Revenue</b>	<b>\$ 1,165,003</b>
<b>Expenditures</b>	
Personnel	\$ 470,580
Retirement & Benefits	\$ 154,798
Purchased Services	\$ 442,360
Supplies & Materials	\$ 54,999
Capital Outlay	\$ 11,638
Other	\$ 13,174
<b>Total Expenditures</b>	<b>\$ 1,147,549</b>
Ending Cash - June 30, 2009	\$ 34,885

Constellation Schools: Lorain Community Middle Cash Basis  
Revenues for the Year Ended June 30, 2009



Constellation Schools: Lorain Community Middle Cash Basis  
Expenditures for the Year Ended June 30, 2009



#### EXPENDITURES

Personnel services, combined with retirement and benefits, accounted for 54% of the expenditures for the year. These expenditures include principal, support staff, teachers, state retirement systems, employment taxes and health insurances.

#### Purchased services

Purchased services (39%) include expenditures for student support services (speech, psychologist, health and occupational therapy), Spanish instruction, music instruction, field trips, professional development, management services, test scoring, facility lease and operations, equipment leases, telephone, postage, travel, marketing and printing.

#### Supplies and materials

Supplies and materials (5%) include textbooks, instructional supplies, testing materials, office supplies, medical supplies, instructional software and maintenance supplies.

#### Capital Outlay

Capital Outlay (1%) includes purchases of equipment, furniture and building renovations.

#### Other

Other (1%) includes audit fees, insurances (property, liability, fidelity bond, directors & officers), dues and subscriptions and miscellaneous.

#### Additional Information

A more detailed set of financial statements may be obtained by calling (440) 845-4200, writing to the Treasurer, Constellation Schools 5983 West 54th Street, Parma, Ohio 44129 or by e-mail at the following address: [babb.thomas@constellationschools.com](mailto:babb.thomas@constellationschools.com)

During the fall of 2009 an audit of the school's financial records for the year ended June 30, 2009 will be completed. The audit report should be available during the winter at the above address and on the Auditor of State's website: [www.auditor.state.oh.us](http://www.auditor.state.oh.us).