



Constellation Schools: Parma Community scores in top 25% of Ohio charter schools and provides a well-rounded educational program with small class sizes to allow for individualized instruction.

The award-winning K-12 school partners with parents and community organizations to support and extend learning beyond the classroom. The

school sets high standards for both academics and behavior with character education and school citizenship programs.

Specialty teachers provide regular instruction in PE, Art, and Performing Arts. Students benefit from numerous special activities, field trips, competitions, and extracurriculars including clubs and sports. Additionally, the school supports students and their families with tutoring and afterschool care.

MISSION STATEMENT

To provide every child an opportunity to obtain an excellent education built on a foundation of character education for life long success.

GRADES SERVED

K - 12

SCHOOL LEADERSHIP

Ciara Gaspar (Day Drive)

David Kassel (Pearl Road)

Bill Bogan (Intermediate)

Jade Woodson (7-8)

Eric Butler (9-10)

Todd Luceke (11-12)

EXECUTIVE PRINCIPAL

Bob Klinar

REGIONAL VICE PRESIDENT

Sarah O'Bryan

SCHOOL YEAR OPENED

2000-01

MANAGED BY ACCEL

2021-22

AUTHORIZER

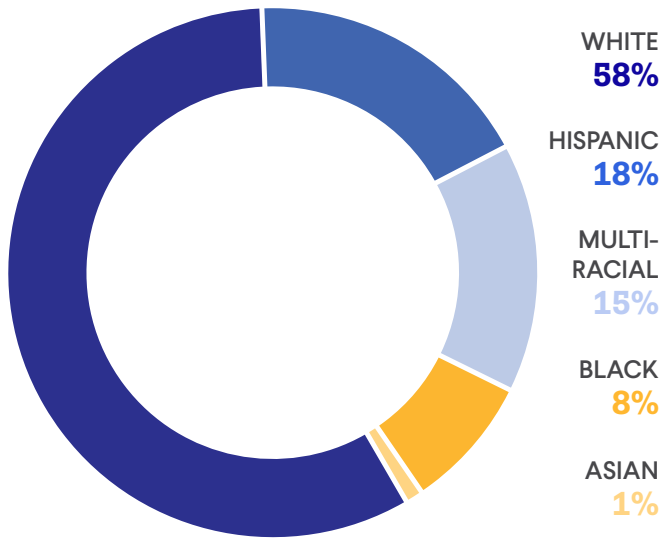
Educational Service

Center of Lake Erie West



2022-23
ANNUAL REPORT

STUDENT DEMOGRAPHICS

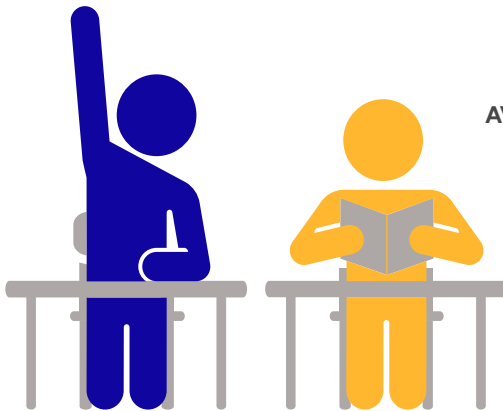


1053

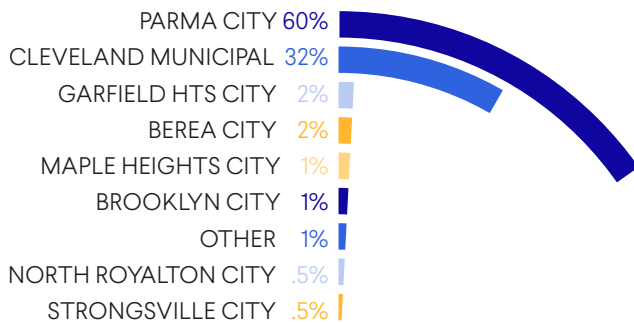
AVERAGE DAILY ENROLLMENT

88%

AVERAGE DAILY ATTENDANCE



DISTRICTS OF RESIDENCE

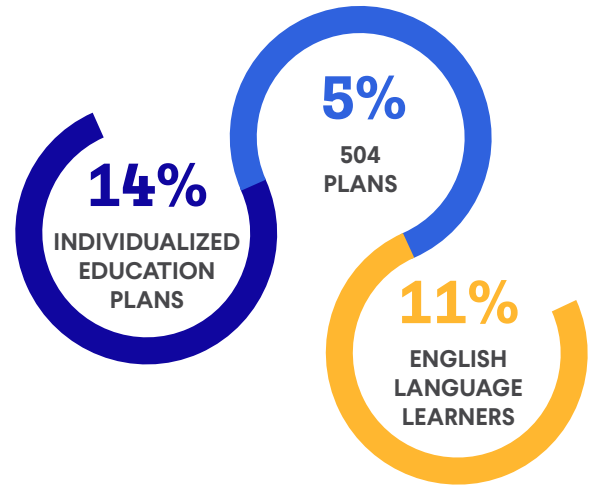


INSTRUCTIONAL & SUPPORT STAFF

AVERAGE CLASS SIZE 78

STAFF TO STUDENT RATIO 62:1

SPECIAL POPULATIONS



51% ECONOMICALLY DISADVANTAGED

9% STUDENT MOBILITY RATE

0% UNHOUSED

HIGHLIGHTS

- Scored in Top 25% of Ohio Charter Schools
- Rated 3 Stars Overall for meeting state expectations
- Rated 3 Stars in Progress for meeting student growth expectations
- Rated 3 Stars in Graduation for meeting state graduation expectations
- 100% of students met the state requirements for promotion to Grade 4
- Provided 975 instructional hours, 6% more than the Ohio requirement for charter schools
- Received an ACCEL Schools award for Teacher Retention
- Reinstated clubs and extracurricular activities (after pandemic suspension) and expanded offerings to include middle school basketball and volleyball
- Adopted Young Rembrandts curriculum in elementary grade levels
- Hosted free summer school and programs including elementary intervention and an Algebra I Bootcamp for middle school

STATE REPORT CARD

PERFORMANCE INDEX SCORE 70.6	OVERALL RATING ★★★
ACHIEVEMENT COMPONENT ★★	PROGRESS COMPONENT ★★★
GAP CLOSING COMPONENT ★★	EARLY LITERACY COMPONENT ★★

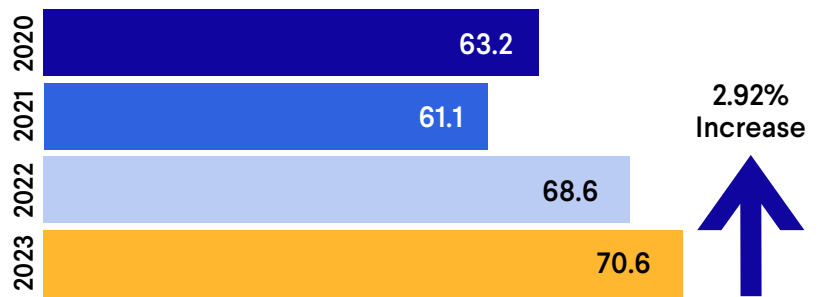


ACADEMIC PROGRESS

Through a well-rounded curriculum that engages students, instructional hours above state requirements, and strong staff retention, Constellation Schools: Parma Community continues steady academic recovery coming out of the pandemic. The school achieved a nearly 3% Performance Index (PI) score increase year-over-year and additionally met state expectations (3 Stars Overall, 3 Stars Progress & 3 Stars Graduation).

Parma Community's academic goals for the 2022-23 school year were for 20% of student to meet or exceed their RIT goals from Fall to Spring as measured by the NWEA Reading & Math Assessment. The school exceeded its goal with 53% of students meeting or exceeding their goals in Reading and 59% in Math.

YOY PERFORMANCE INDEX SCORE



PROGRESS COMPONENT RATINGS BY SUBJECT & GRADE LEVEL

	ELA	Math	Science
4th Grade	Green	Green	Grey
5th Grade	Dark Blue	Dark Blue	Dark Blue
6th Grade	Green	Dark Blue	Grey
7th Grade	Red	Red	Grey
8th Grade	Green	Green	Green

- Dark Blue: Students significantly exceeded state expectations in academic growth
- Green: Students met state expectations in academic growth
- Red: Students made less academic growth than state expected
- Grey: Value Added data is not available

Constellation Schools: Parma Community met the following 11.6 goals set by Educational Service Center of Lake Erie West:

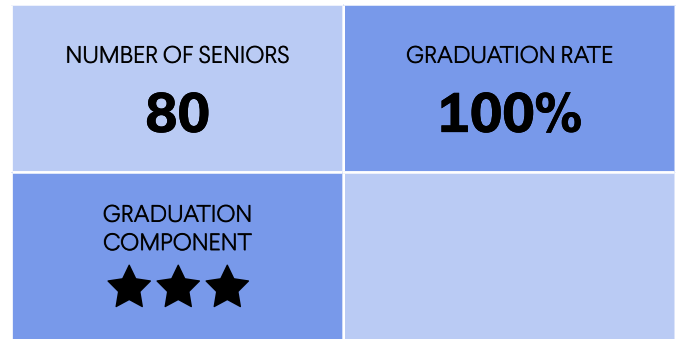
- Mission, Parent Satisfaction, Governing Board Performance, Financial Performance
- Achievement: Performance Index
- Graduation Rate: 4-Year Graduation Rate, 5-Year Graduation Rate
- Early Literacy: Early Literacy Component
- Comparative Schools Data: Similar School #1
- Other Academics Measures: Subgroup, Reading, Math, Improving K-3 Literacy
- Student Discipline: Grades 4-8
- Organizational & Operational: Exceeds- On-Time Rate, Accuracy Percentages

PARMA COMMUNITY

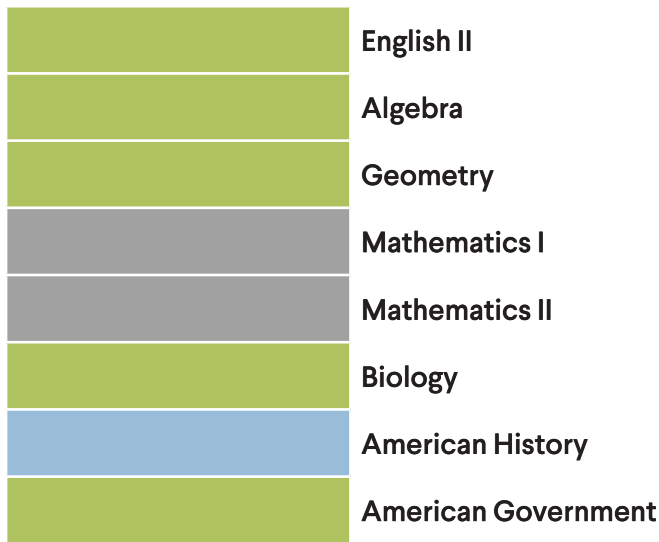
CLASS OF 2023



One hundred percent of Constellation School's Class of 2023 graduated on-time and gained acceptance to over 25 colleges & universities.

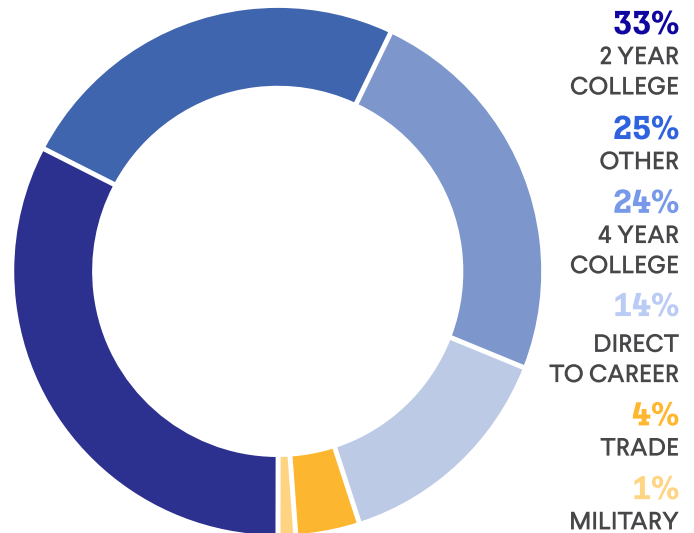


HIGH SCHOOL PROGRESS COMPONENT RATINGS BY SUBJECT



- Students exceeded student growth expectations
- Students met state expectations in academic growth
- Value Added data is not available

POST GRADUATION PLANS



PARMA SENIORS WERE ACCEPTED INTO THE FOLLOWING COLLEGES & UNIVERSITIES:

- | | | | |
|-------------------------------------|---------------------------------|-------------------------------------|-----------------------------|
| Baldwin Wallace University | Dallas College | Kent State University | The Ohio State University |
| Bowling Green State University | Duquesne University | Lorain County Com. College | University of Miami |
| Central State University | Elizabeth City State University | North Carolina A&T State University | University of Nebraska |
| Cleveland State University | Fayetteville State University | Notre Dame College | University of Pittsburgh |
| Coppin State University | Full Sail University | Ohio Business College | University of Toledo |
| Cuyahoga Community College District | Hiram College | Pennsylvania State University | Ursuline College |
| | John Carroll University | Texas A&M University | Wright State University |
| | | | Youngstown State University |



Constellation Schools Parma Community

SCHOOL BOARD MEMBERS

- JOHN NOGA
- JERRY BEDNAR
- BERT BUTTS
- MICHELE NORMAN
- LEO TISCHER



AUTHORIZED BY

The Educational Service Center of Lake Erie West (ESCLEW) served as a sponsor for Constellation Schools: Parma Community during the 2022-2023 school year. ESCLEW monitored the school's academic and fiscal performance, as well as organization and operation of the school, and determined that the school was overall compliant with all laws and rules.



FINANCIAL DATA

State Sources	10,322,981
Federal Sources	4,351,480
Local Sources	0
TOTAL REVENUES	\$14,674,461

Salaries & Wages	6,200,672
Employee Benefits	1,862,655
Purchased Services	3,618,339
Supplies & Materials	734,002
Capital Outlay	468,521
Other Expenses	647,518
TOTAL EXPENSES	\$13,531,708

At time of publication, 2023 fiscal year data was not available from the Ohio Auditor of State. For updated information visit: www.auditor.state.oh.us

