



Established in 2007, Constellation Schools: Westside Community School of the Arts offers visual and performing arts instruction as part of the regular school day. Students in Kindergarten through Grade 4 receive 30 minutes of visual arts and 30 minutes of music instruction daily. Starting in Grade 4, students can participate in orchestra. Students in Grades

5-8 spend one hour each day focusing on visual art, vocal art, band or orchestra. In addition to arts instruction and an academic curriculum aligned with Ohio standards, students participate in regular PE and character education.

The school culture promotes high expectations for both academics and behavior with programs to support social and emotional growth. Students experience small class sizes and have a range of sports, clubs, and extracurricular activities such as Basketball, Cheerleading, Volleyball, Girls on the Run, and more. The school partners with parents and community organizations to support and extend learning beyond the classroom.

MISSION STATEMENT

To provide every child an opportunity to obtain an excellent education built on a foundation of character education for life long success.



GRADES SERVED

K - 8

PRINCIPAL

Howie Waugaman

ASSISTANT PRINCIPAL

Anna Deitsch

EXECUTIVE PRINCIPAL

Katherine Rybak

REGIONAL VICE PRESIDENT

Sarah O'Bryan

SCHOOL YEAR OPENED

2007-08

MANAGED BY ACCEL

2021-22

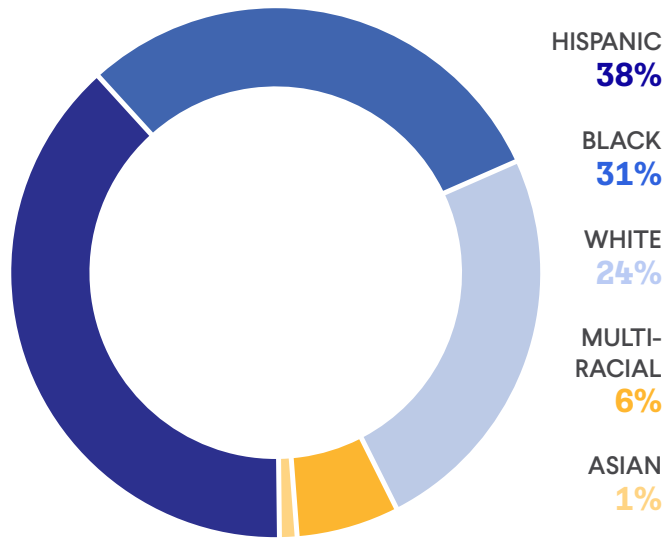
AUTHORIZER

**Buckeye Community
Hope Foundation**



2022-23
ANNUAL REPORT

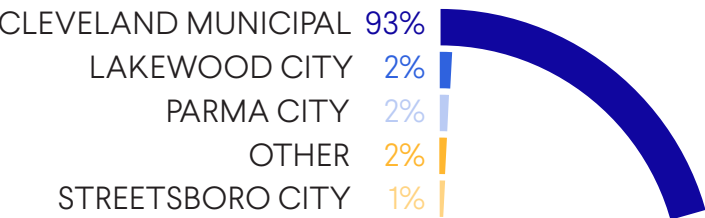
STUDENT DEMOGRAPHICS



165
AVERAGE DAILY
ENROLLMENT

86%
AVERAGE DAILY
ATTENDANCE

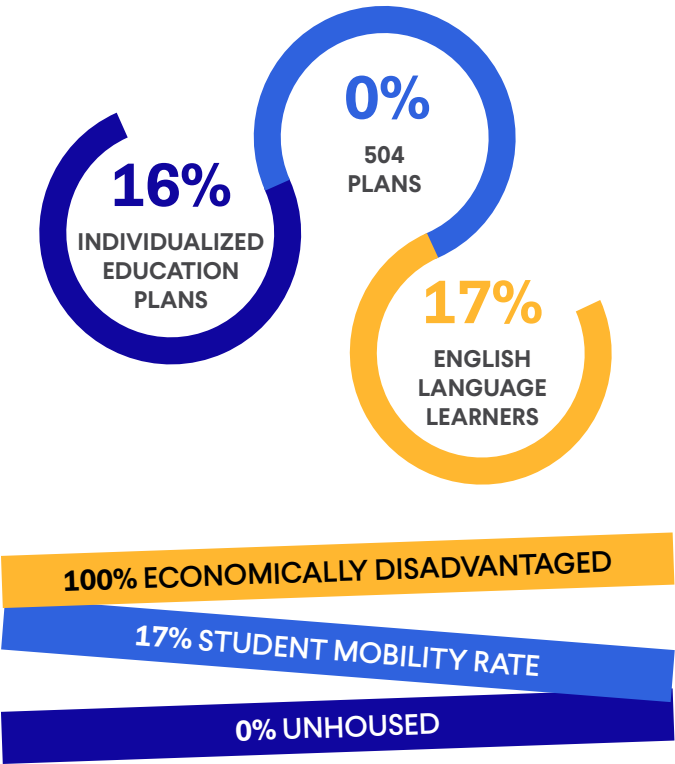
DISTRICTS OF RESIDENCE



INSTRUCTIONAL & SUPPORT STAFF



SPECIAL POPULATIONS



HIGHLIGHTS

- Achieved a year-over-year performance increase
- Provided 1053 instructional hours, 14% more than the Ohio requirement for charter schools
- Fielded successful Volleyball, Basketball & Cheerleading teams

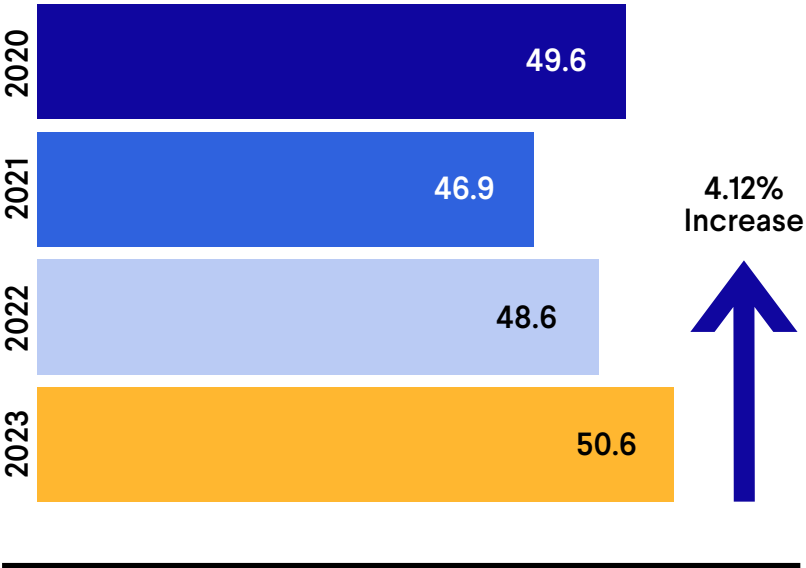


STATE REPORT CARD

PERFORMANCE INDEX SCORE 50.6	OVERALL RATING ★★
ACHIEVEMENT COMPONENT ★	PROGRESS COMPONENT ★★
GAP CLOSING COMPONENT ★★	EARLY LITERACY COMPONENT ★



YOY PERFORMANCE INDEX SCORE



PROGRESS COMPONENT RATINGS BY SUBJECT & GRADE LEVEL

	ELA	Math	Science
4th Grade	Students met state expectations in academic growth	Students made less academic growth than state expected	Value Added data is not available
5th Grade	Students met state expectations in academic growth	Students met state expectations in academic growth	Students made less academic growth than state expected
6th Grade	Students met state expectations in academic growth	Students met state expectations in academic growth	Value Added data is not available
7th Grade	Students met state expectations in academic growth	Students met state expectations in academic growth	Value Added data is not available
8th Grade	Students made less academic growth than state expected	Students made less academic growth than state expected	Students made less academic growth than state expected

Students met state expectations in academic growth
Students made less academic growth than state expected
Value Added data is not available





Constellation Schools

Westside Community School of the Arts

SCHOOL BOARD PRESIDENT

GERALD HILINSKI

BOARD VICE PRESIDENT

GARY COUPE

BOARD SECRETARY

SEAN MENDISE

BOARD MEMBERS

JACUELINE GRIMM

DIANE LONGSTRETH



AUTHORIZED BY

Buckeye Community Hope Foundation (BCHF) relies on multiple sources of data to evaluate the community school's performance including academic performance on national normed tests and academic scores published by the Department of Education & Workforce on the Local Report Card. In addition, BCHF conducts multiple onsite visits to the school throughout the year to ensure compliance with all Rule and Law, as well as, the sponsorship contract. Performance results for the school will be available for the 2022-2023 school year on the BCHF website www.bchf.org after November 30.



FINANCIAL DATA

State Sources	2,003,915
Federal Sources	1,151,369
Local Sources	0
TOTAL REVENUES	\$3,155,284

Salaries & Wages	1,033,615
Employee Benefits	293,045
Purchased Services	1,060,840
Supplies & Materials	172,506
Capital Outlay	96,249
Other Expenses	48,126
TOTAL EXPENSES	\$2,704,382

At time of publication, 2023 fiscal year data was not available from the Ohio Auditor of State. For updated information visit:

www.auditor.state.oh.us